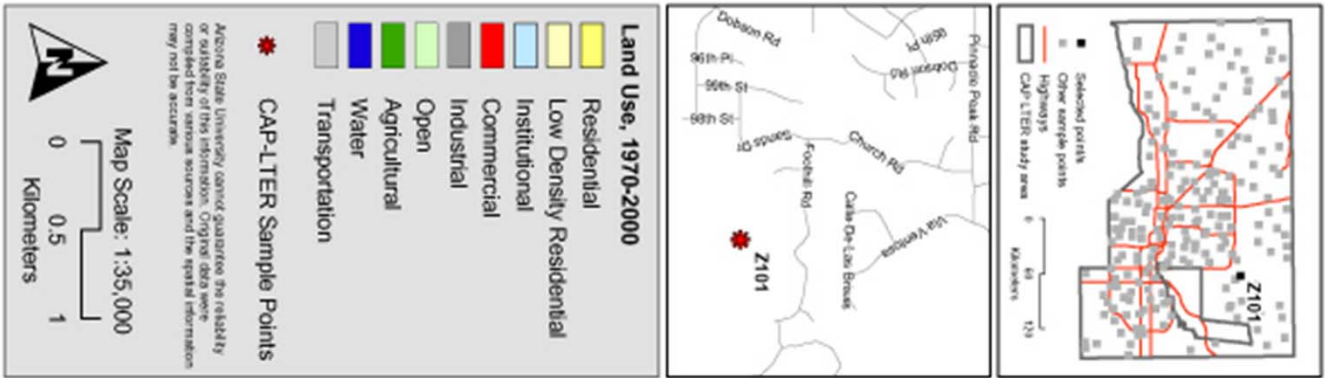


# Historical Aerial Photographs

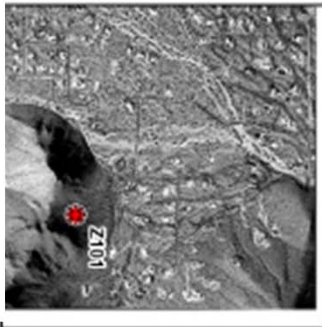
- These slides are aerial photographs taken at 5 different locations across the Phoenix metropolitan area.
- Slides 2-6 show the photographs in sequence with associated dates and land use changes. Do not share with students until they have completed the lesson. Students can compare how they categorized the land use vs. a professional geographer



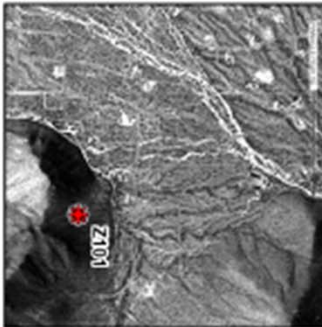
2010 Aerial



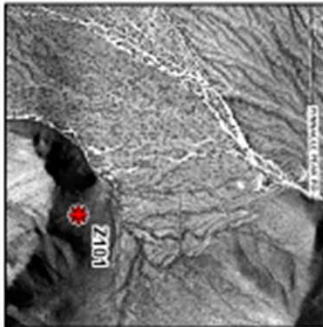
2000 Aerial



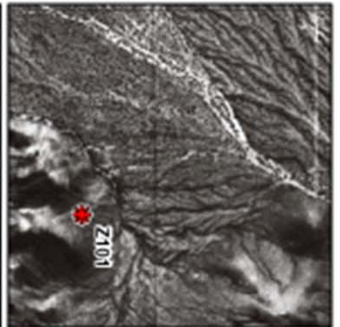
1990 Aerial



1980 Aerial



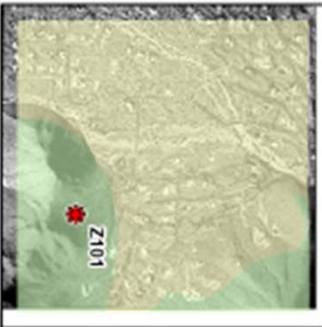
1970 Aerial



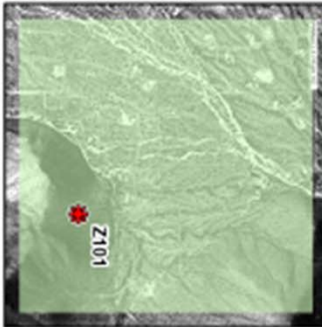
2010 Land Use



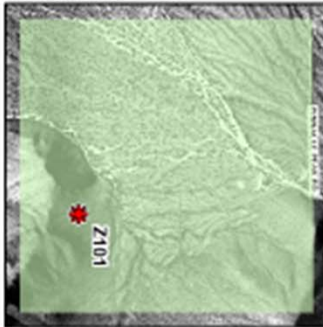
2000 Land Use



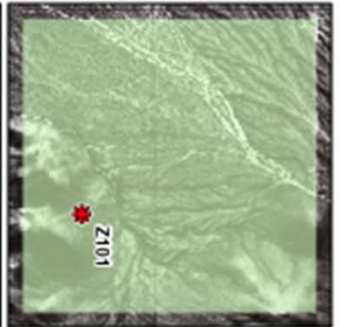
1990 Land Use



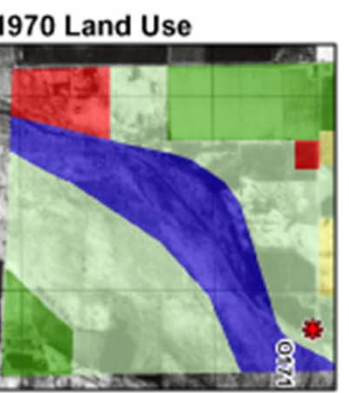
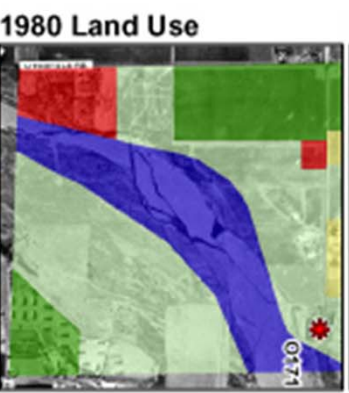
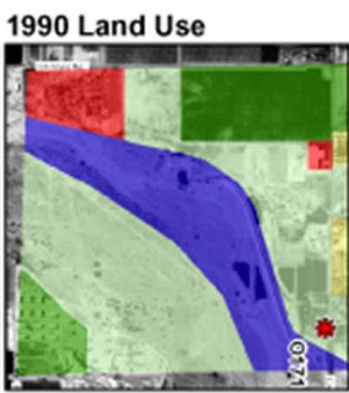
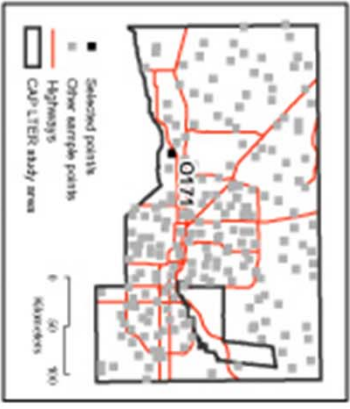
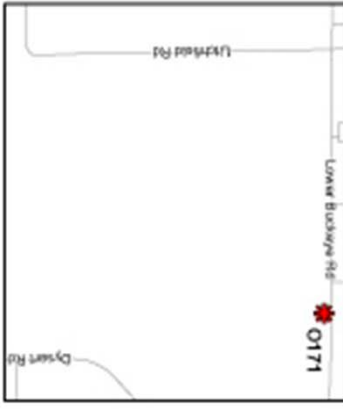
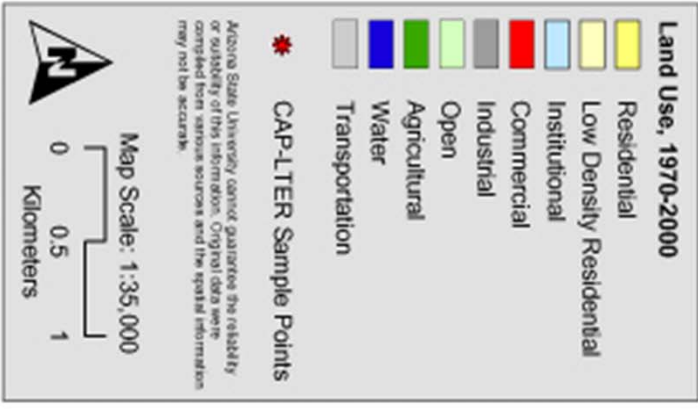
1980 Land Use

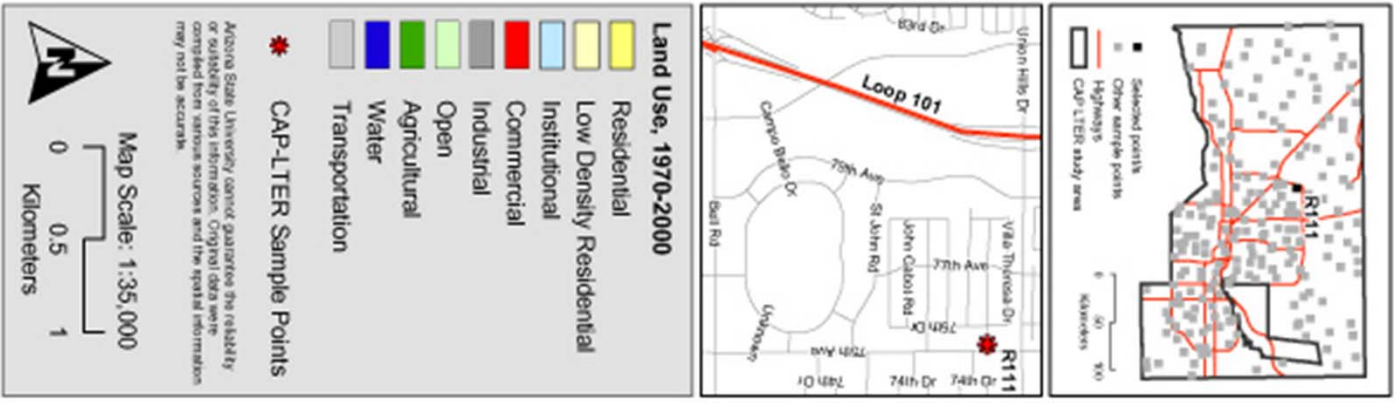


1970 Land Use









2010 Aerial



2000 Aerial



1990 Aerial



1980 Aerial



1970 Aerial



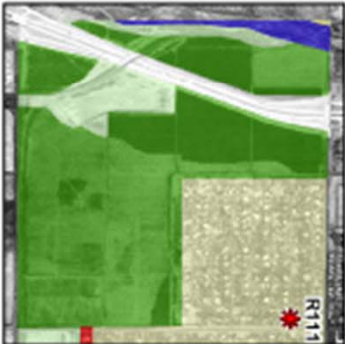
2010 Land Use



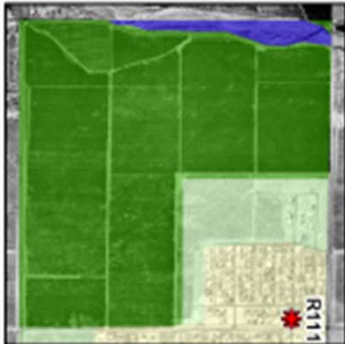
2000 Land Use



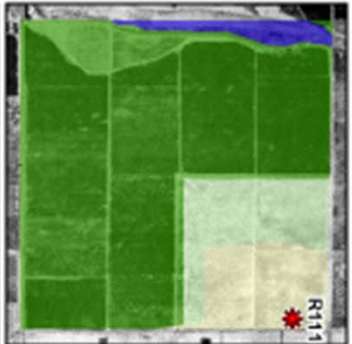
1990 Land Use

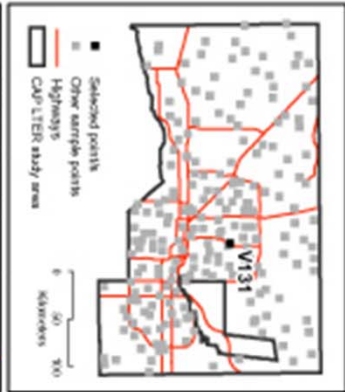
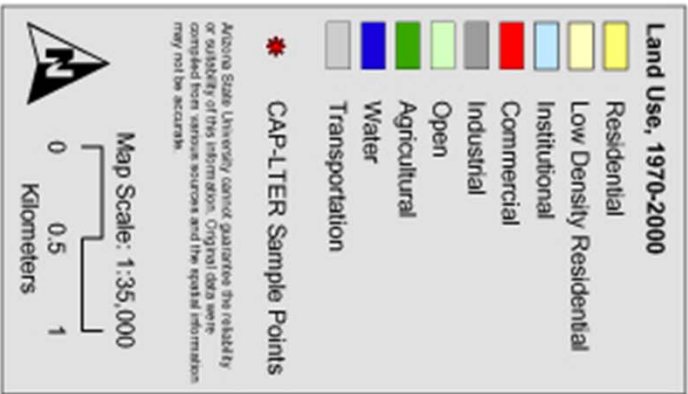


1980 Land Use



1970 Land Use





2010 Aerial



2000 Aerial



1990 Aerial



1980 Aerial



1970 Aerial



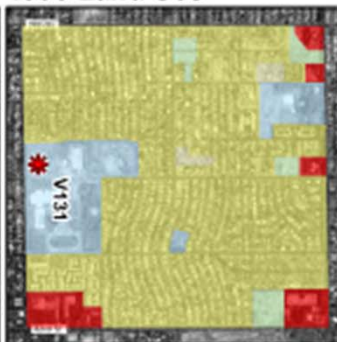
2010 Land Use



2000 Land Use



1990 Land Use



1980 Land Use



1970 Land Use



McKellips Rd. & Stapley Rd.

1970



McKellips Rd. & Stapley Rd.

1980





# McKellips Rd. & Stapley Rd.

1990



McKellips Rd. & Stapley Rd.

2000



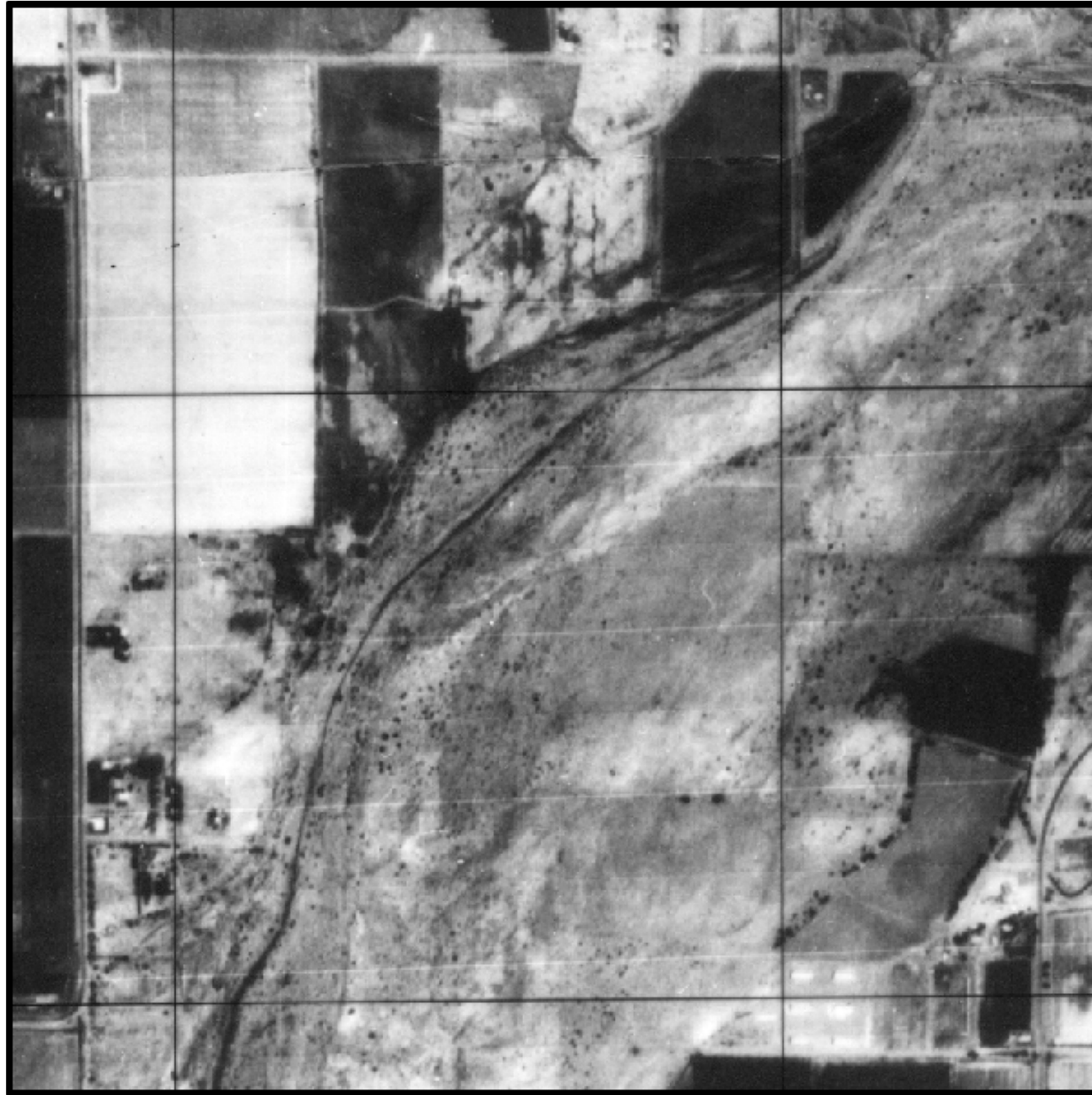
McKellips Rd. & Stapley Rd.

2010



Lower Buckeye Rd. and Litchfield Rd

1970



Lower Buckeye Rd. and Litchfield Rd

1980



# Lower Buckeye Rd. and Litchfield Rd

1990



Lower Buckeye Rd. and Litchfield Rd

2000



Lower Buckeye Rd. and Litchfield Rd

2010





Union Hills and 75<sup>th</sup> Ave.

1970



Union Hills and 75<sup>th</sup> Ave.

1980



Union Hills and 75<sup>th</sup> Ave.

1990



Union Hills and 75<sup>th</sup> Ave.

2000



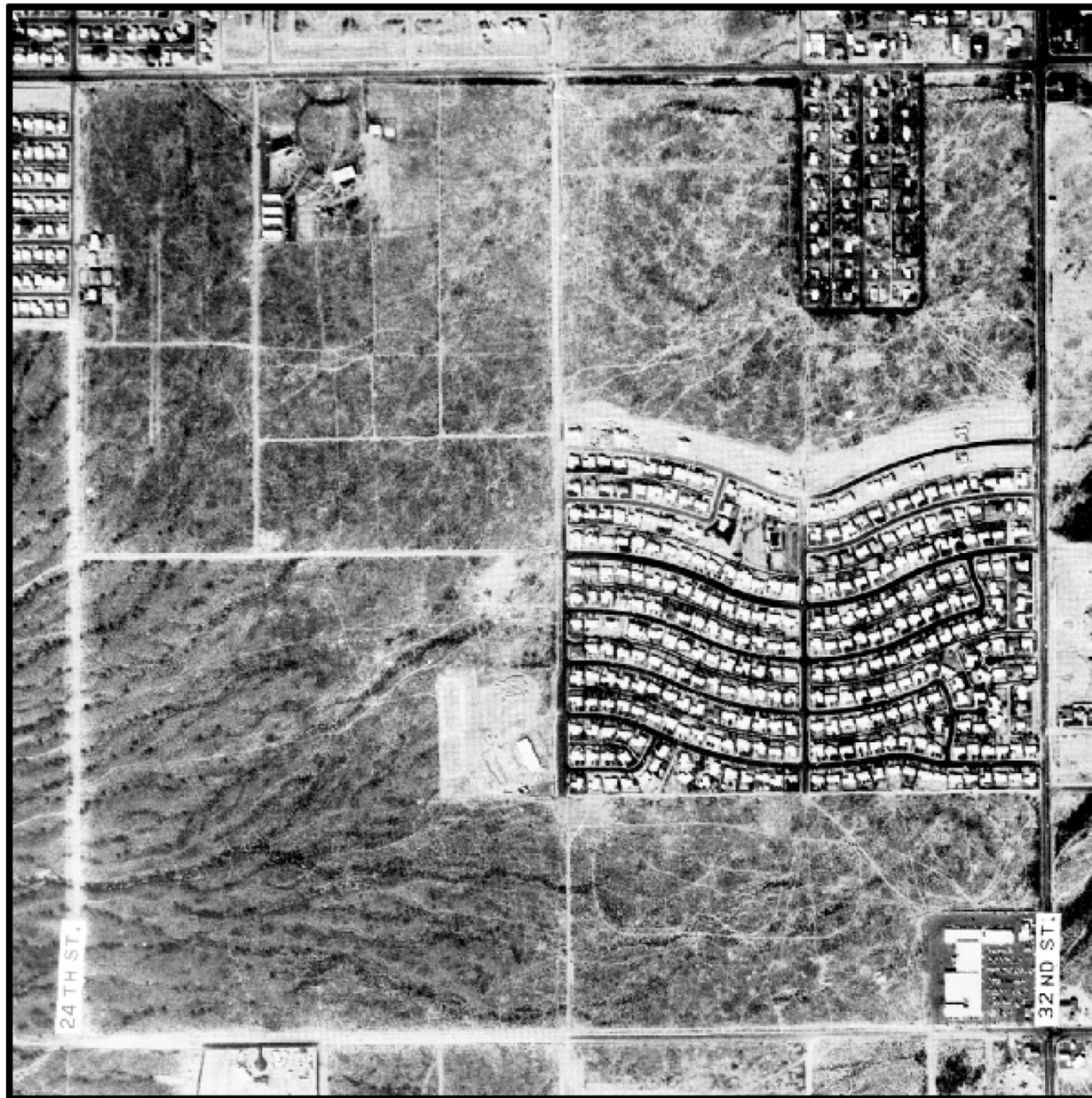
Union Hills and 75<sup>th</sup> Ave.

2010



Shea Blvd. and 27<sup>th</sup> St.

1970



Shea Blvd. and 27<sup>th</sup> St.

1980



Shea Blvd. and 27<sup>th</sup> St.

1990





Shea Blvd. and 27<sup>th</sup> St.

2000



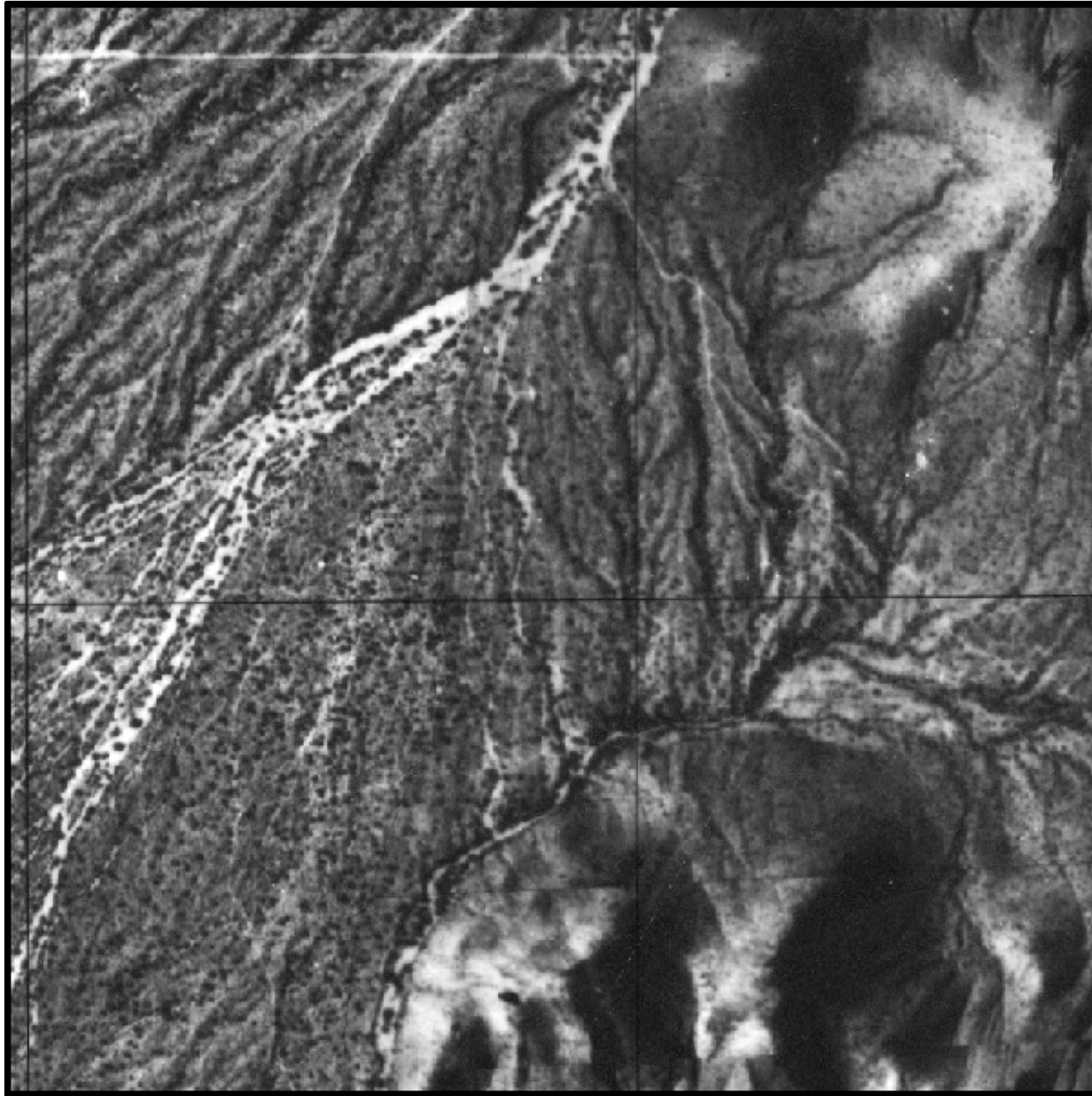
Shea Blvd. and 27<sup>th</sup> St.

2010



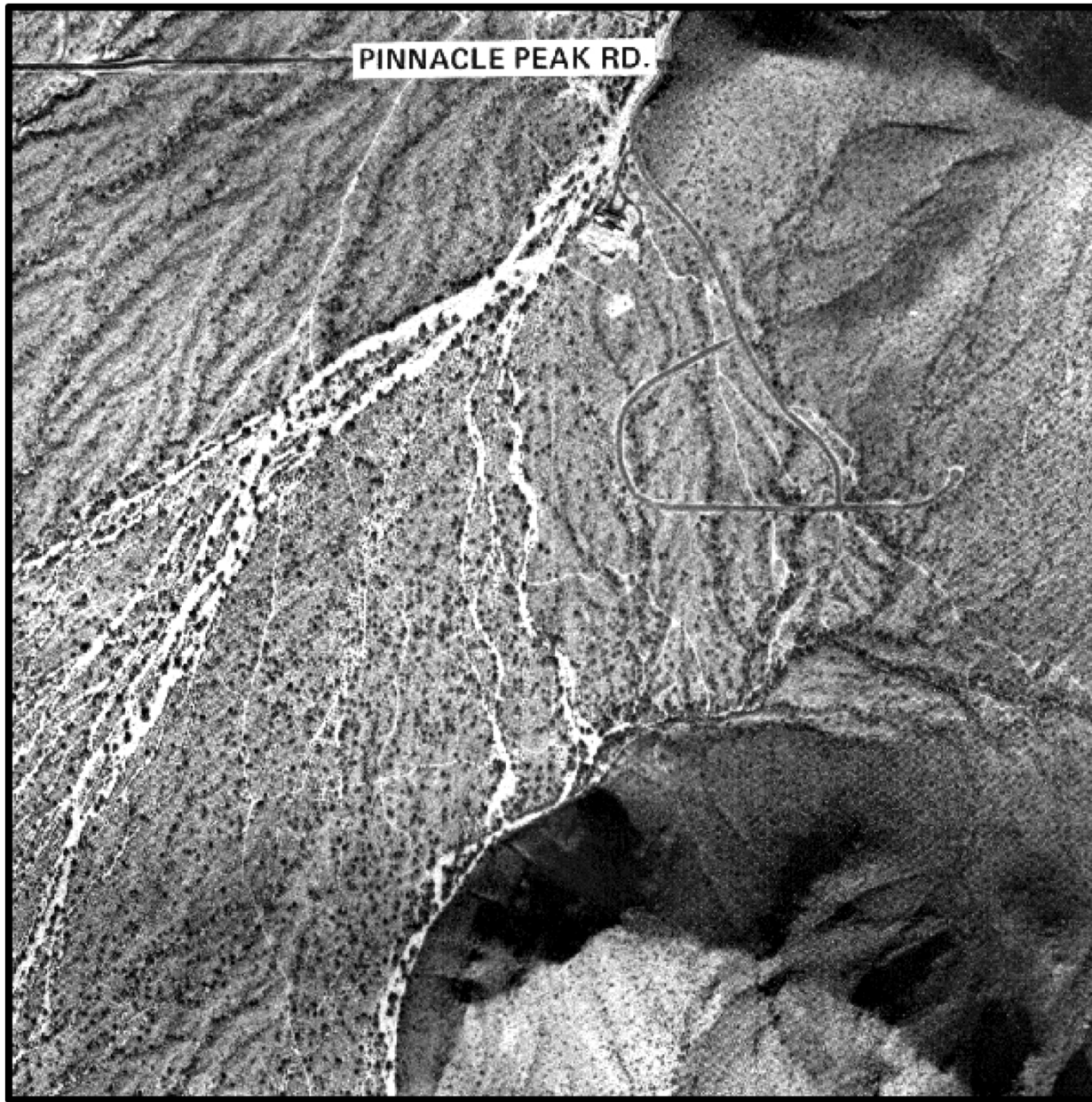
Pinnacle Peak Rd and 98<sup>th</sup> St.

1970



Pinnacle Peak Rd and 98<sup>th</sup> St.

1980



Pinnacle Peak Rd and 98<sup>th</sup> St.

1990



