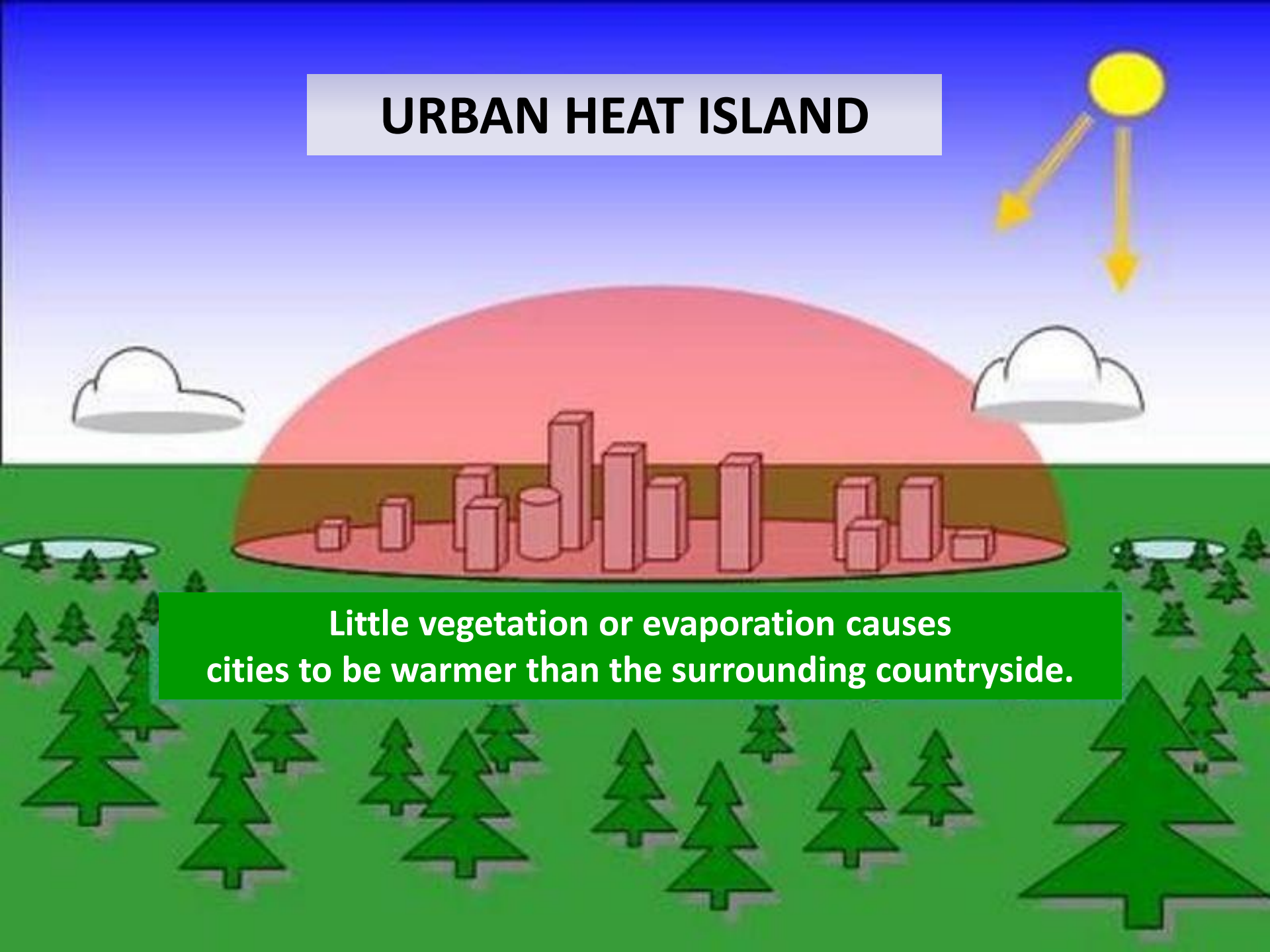




valley
permaculture
alliance

Shade Tree Program

URBAN HEAT ISLAND



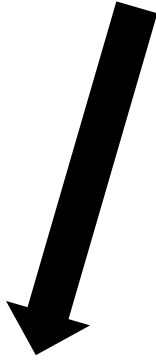
Little vegetation or evaporation causes cities to be warmer than the surrounding countryside.

As city temperatures

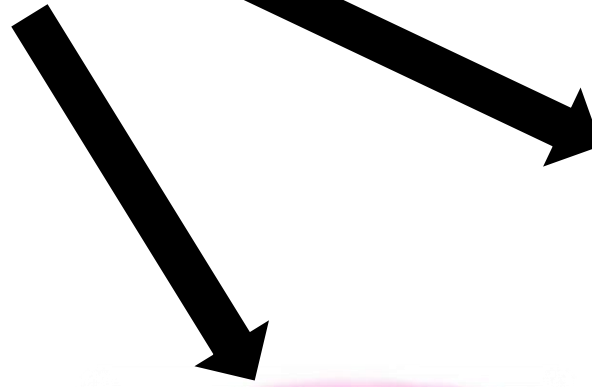


Increased Energy Consumption

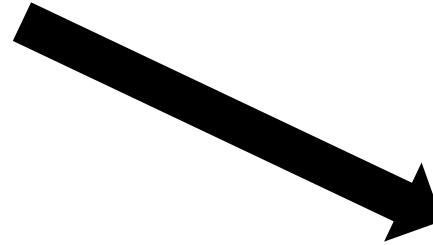
increase due to UHI effect:



Impaired Water Quality

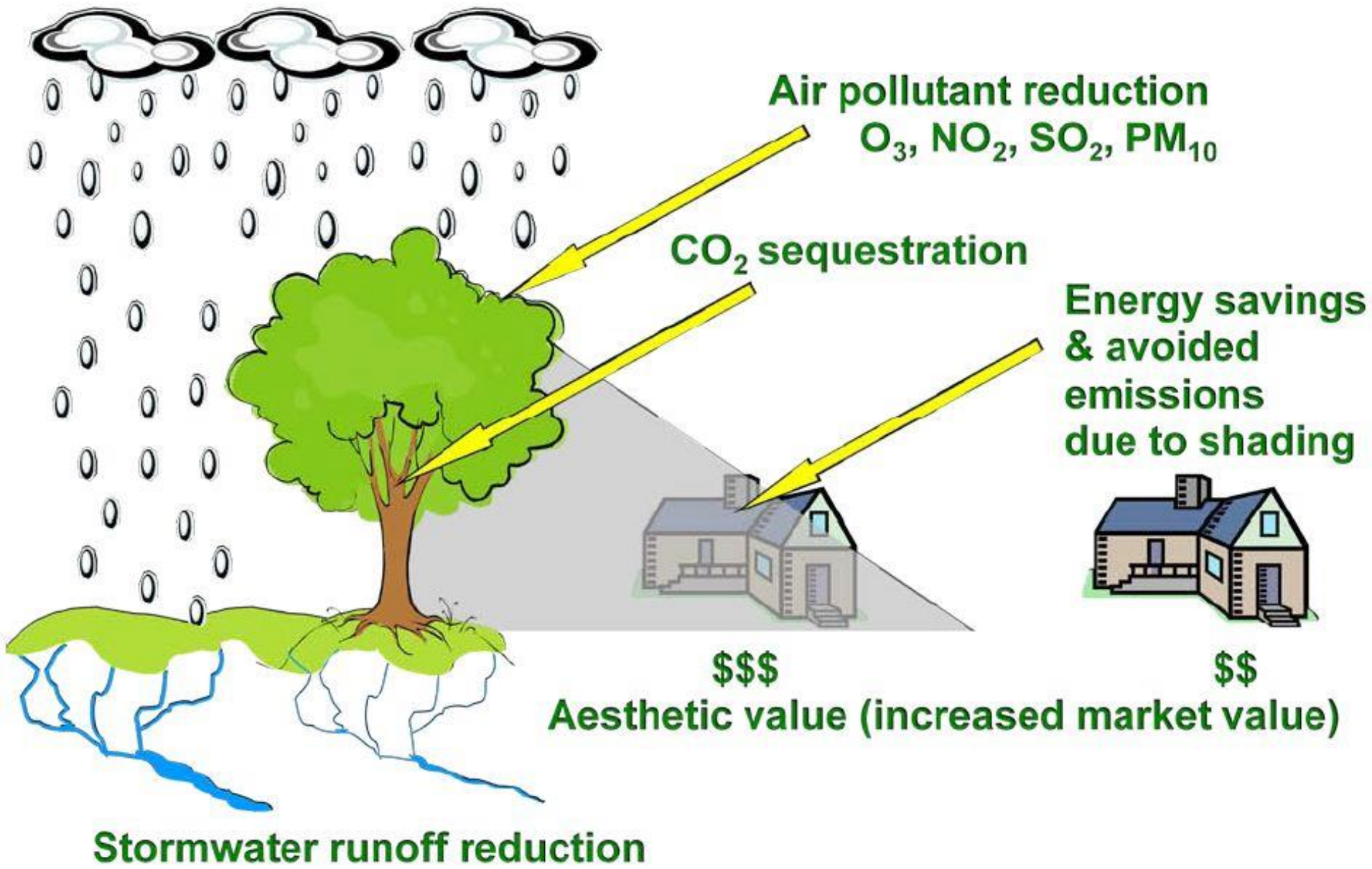


Compromise Health & Comfort



Increased Pollution

Ecosystem services provided by urban trees



How the VPA gets trees to valley residents through the APS and SRP Shade Tree Programs



Program Requirements

- APS/SRP single family residential customers
- Plant the trees **within 15 feet** of a conditioned space on the **western, eastern or southern side of home**
Legal right to and will plant trees on the property
- Ability to and will care for the trees as needed
- Attend a 60-90 minute workshop

Semi-truck arrives early in the morning.



The truck contains 6 different native varieties.



Volunteers get a great morning workout.



A **Tree Corral** is organized.



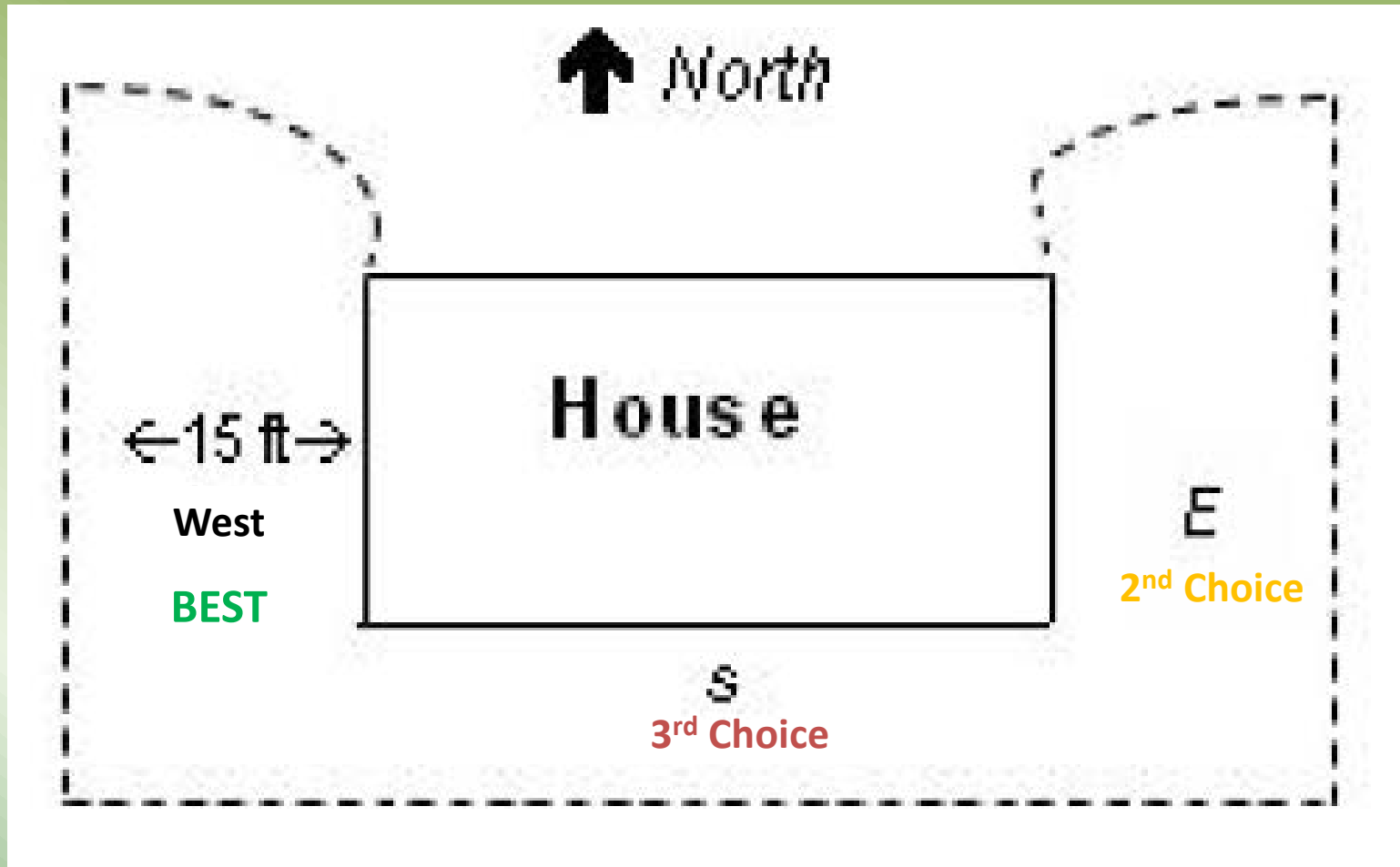
A **Registration Table** is set-up to welcome participants.

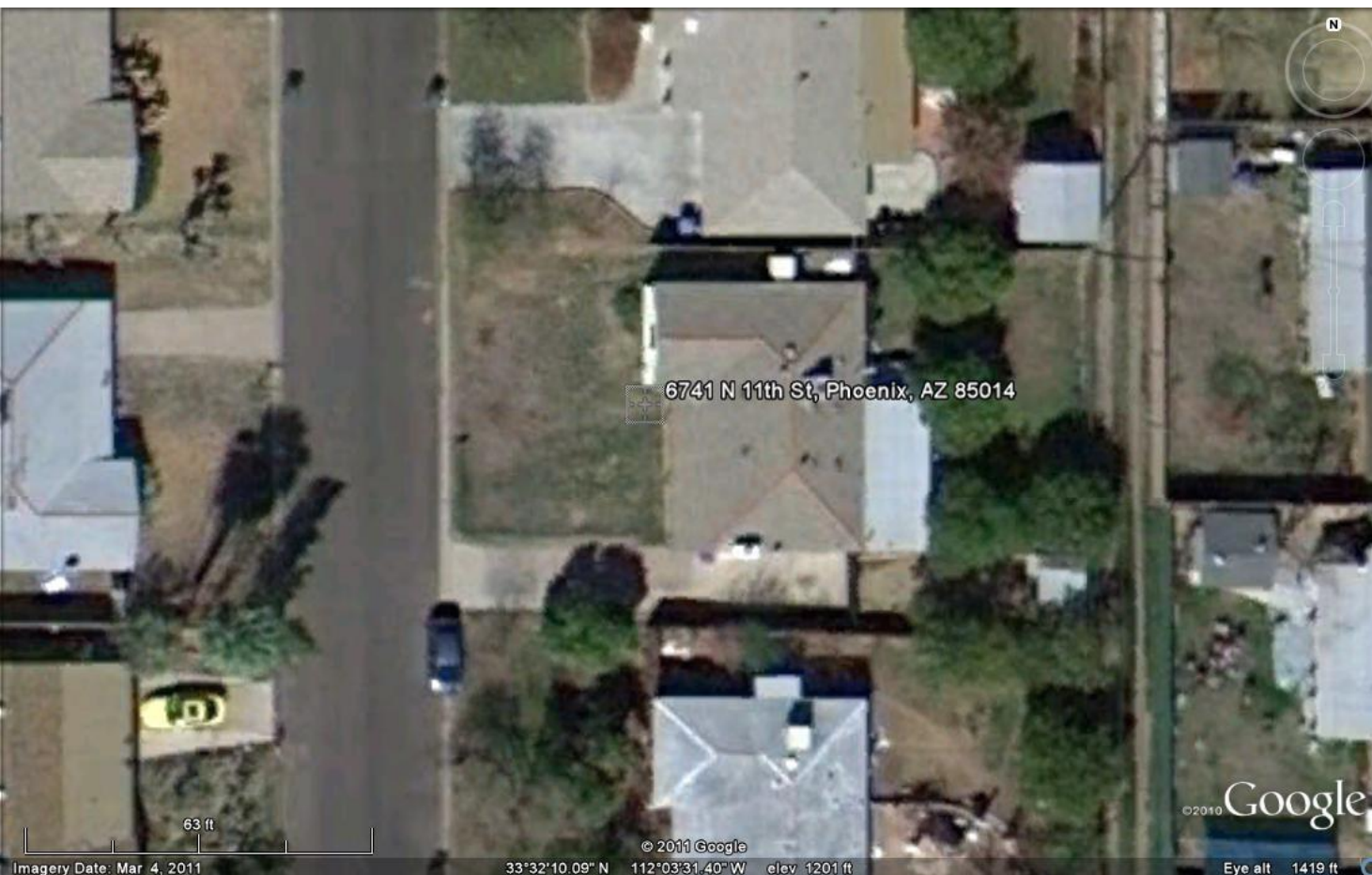




Participants attend a **workshop** that will teach them how to plant and take care of their trees.

Energy Saving Planting Zone





Seven Tips to Planting a Tree

1 FIND YOUR IDEAL PLANTING LOCATION For energy efficiency, shade trees should be planted within 15 feet of your home on the west, south or east side.

2 CALL BEFORE YOU DIG Before planting, call the 811 hotline to have underground utilities located.

3 HANDLE WITH CARE Always lift the tree by the root ball. Keep the roots moist until planting.

4 DIGGING A PROPER HOLE Dig 2 to 5 times wider than the diameter of the root ball with sloping sides to allow for proper root growth.

5 PLANTING DEPTH The trunk flare should sit slightly above ground level and the topmost roots should be buried 1 to 2 inches.

6 FILLING THE HOLE Backfill with native soil unless it's all clay. Tamp in soil gently to fill large air spaces.

7 MULCH Allow 1 to 2 inch clearance between the trunk and the mulch. Mulch should be 2 to 3 inches deep.



After the workshop participants
get a chance to talk to local
experts

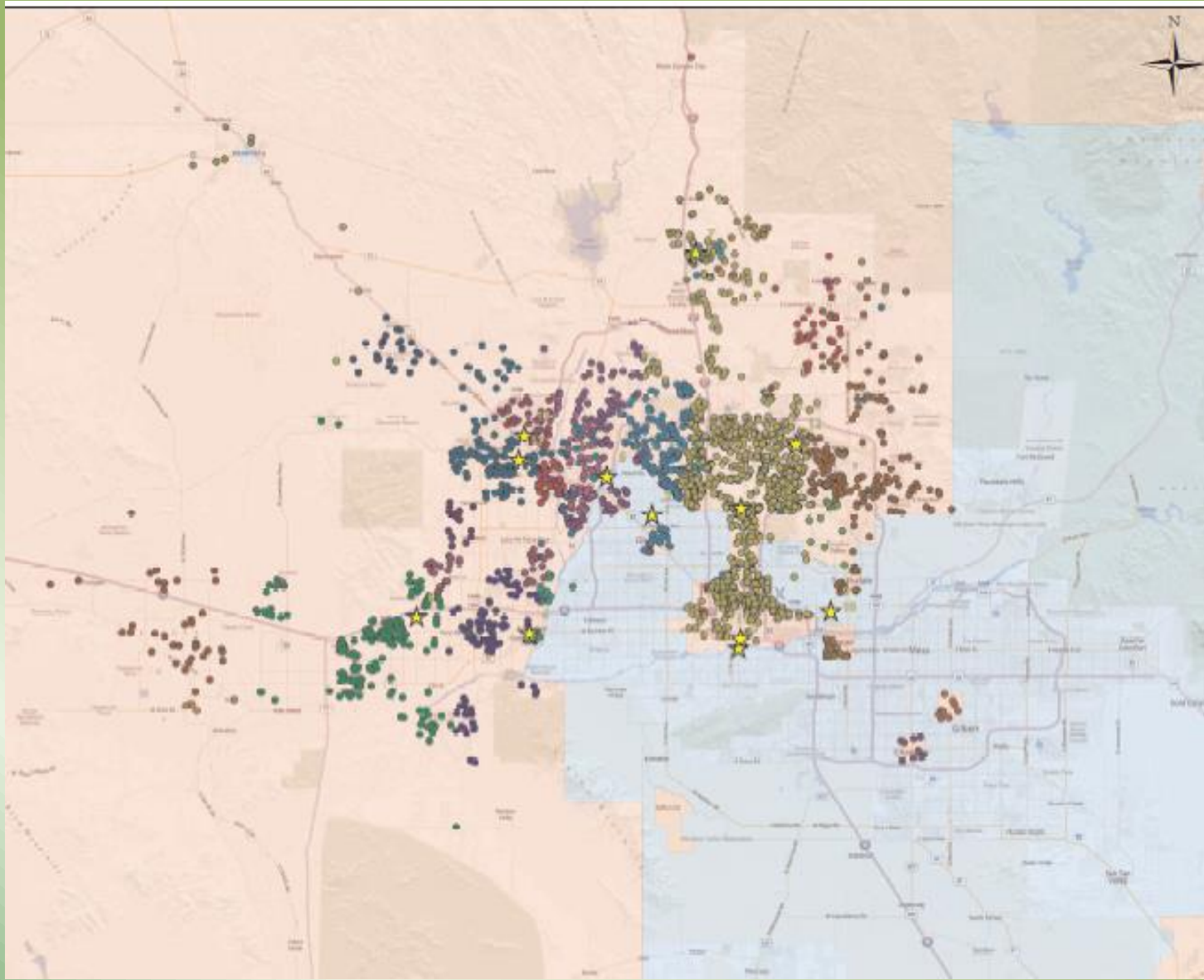




Tree Runners bring participants the trees they choose.



Participants are **thrilled** to get their trees.



**“We helped make the Valley a greener,
shadier, place today!”**



**Join the VPA in distributing over 12,500
shade trees this year!**