

City of Phoenix

# Planning

---

The Urban Forest



2013





2013



Where  
do you  
start?



2013

# City of Phoenix Tree and Shade Task Force





2013

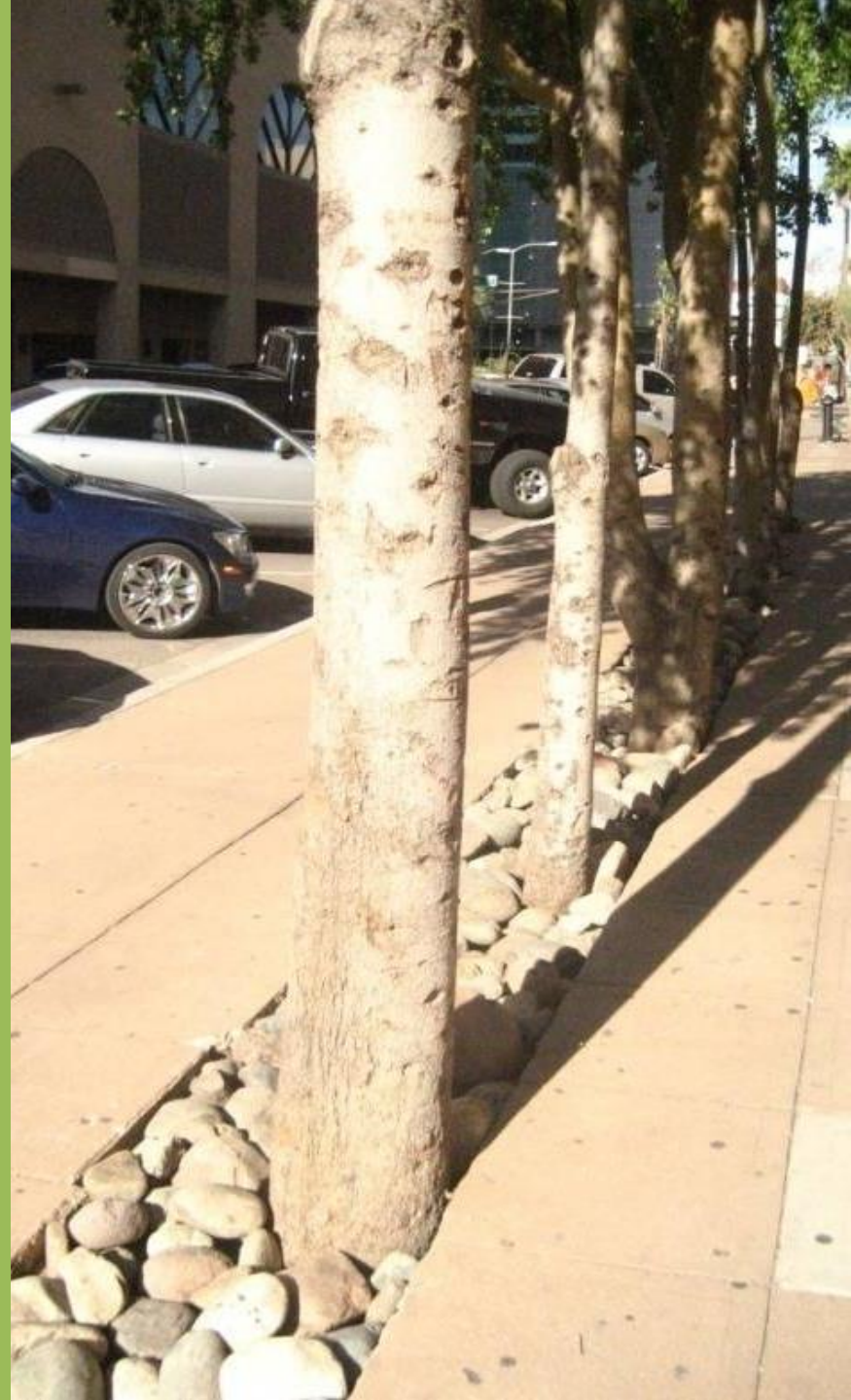
# Challenges





2013

# Challenges





2013

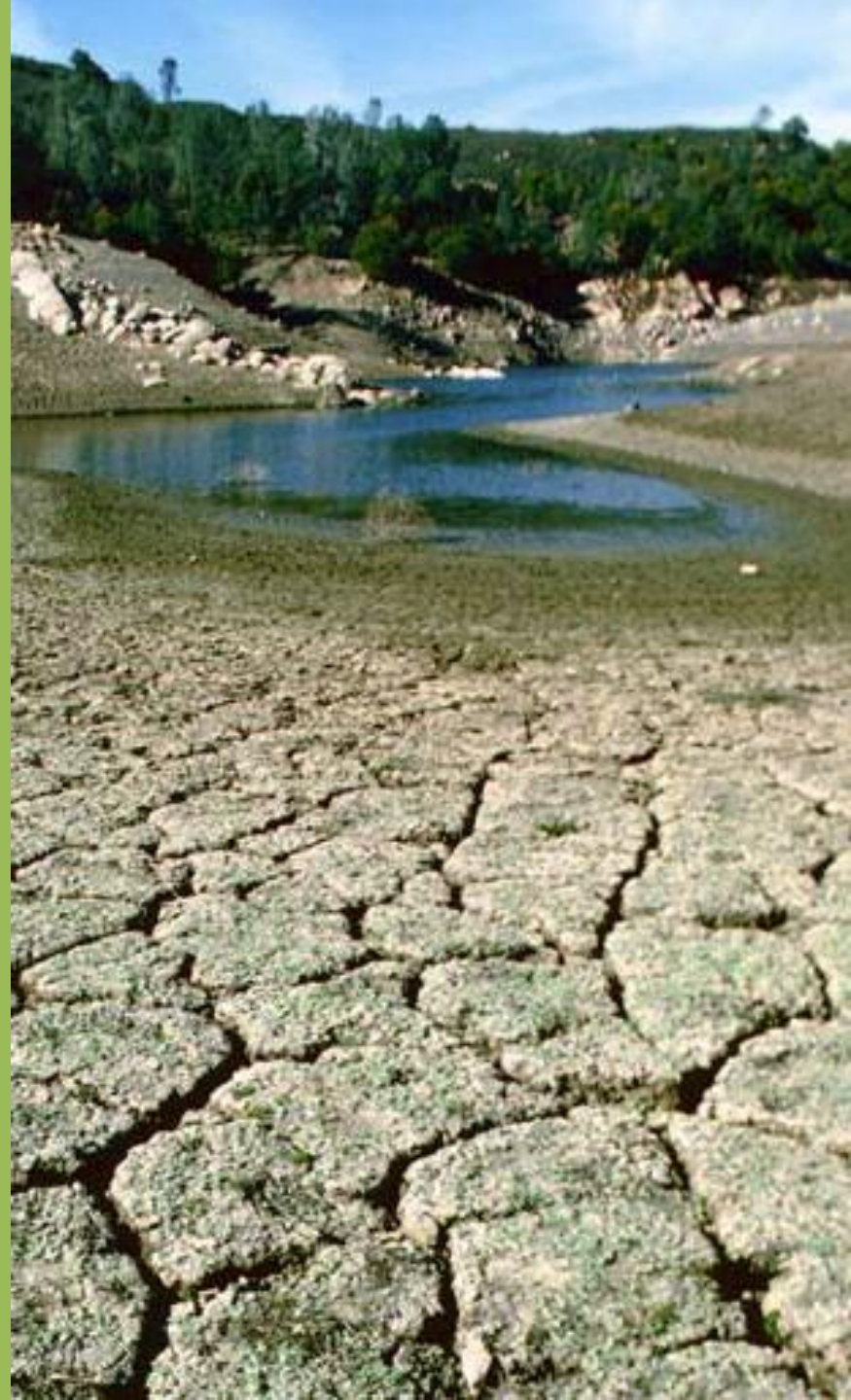
# Challenges





2013

# Challenges





2013

# Challenges





Today



# VISION

Tomorrow





2010



# 2030 VISION

Achieve an average  
25% canopy coverage  
in Phoenix.

# ACHIEVING THE VISION



# The Tree and Shade Master Plan Portal Document -

<ftp://www.phoenix.gov/pub/PARKS/trees.pdf>

- E-Document
- Hyperlinks



Contents	Executive Summary	6
	The Vision	12
	Introduction	14
	Achieving the Vision	28
	 Raise Awareness (Educate)	31
	A / Recommendations	32
	B / Policy	34
	 Preserve, Protect and Increase	37
	A / Recommendations	38
	B / Policy	42
	 Sustainable and Maintainable Infrastructure	45
	A / Recommendations	46
B / Policy	48	
Conclusion	51	
Appendix	52	



